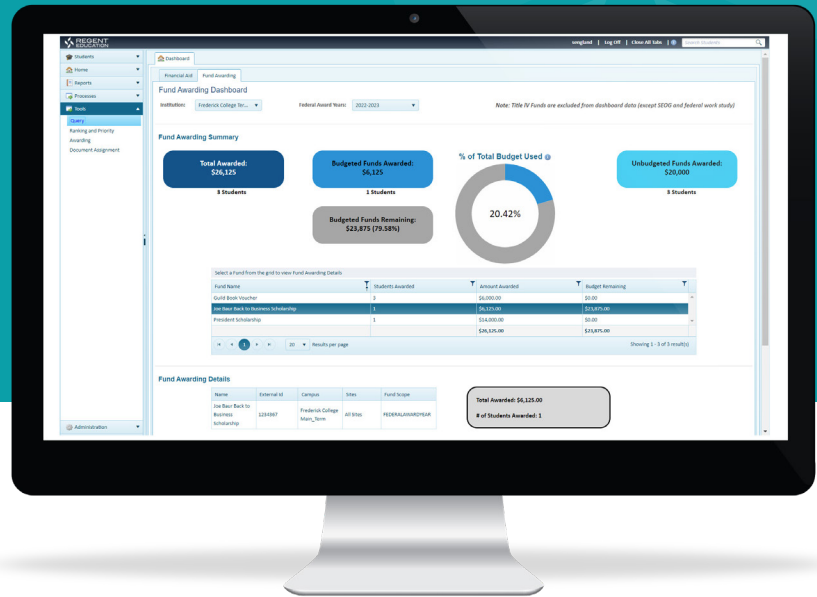


Regent Fund

Make All Your Available Scholarship Dollars Count



Regent Fund automates scholarship management from application to award to reporting, enabling financial aid leaders and scholarship managers to drive increased enrollment.

Regent Fund eliminates manual processes using built-in logic and integrated student data. And using institution-specific criteria they can create and monitor, Regent Fund automates the awarding process, providing a holistic view of eligible students and available awards so institutions can quickly and efficiently award – and re-award – scholarships to the students who need them most.



Make it easy for students to apply for all available scholarships

Regent Fund's configurable, unified, mobile-friendly smart form simplifies the scholarship application process, by making it easy for students to apply for all of your institutional programs. Using personalized, proactive communications, students always remain up-to-date and informed.



Award scholarships to the highest-priority applicants

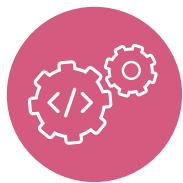
With Regent Fund, your institution can automatically find and identify qualifying students, even with complex eligibility criteria, providing a complete, integrated view of your student data across scholarship applications, ISIRs, your financial aid system, SIS, CRM, and other data sources.

Key Features of Regent Fund



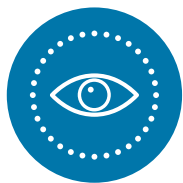
Maximize available scholarship dollar attribution

Using powerful sorting and weighting capabilities, your institution can match, rank, prioritize, and identify the right applications for your limited scholarship dollars. And with insight into updated data integrated from your FAM, SIS, AR, or other systems, you can quickly redeploy unused, canceled, or unaccepted scholarship dollars to the candidates who need them most.



Automate and award scholarships based on dynamic scholarship rules

By applying the advanced, enrollment-related scholarship rules defined by your institution, Regent Fund automates the awarding of scholarships. And because Regent Fund is flexible, your institution can award scholarships based on a simple amount or flexible and sliding amounts based on student attributes such as enrollment level, tuition as a percentage, or student bio demographic variables.



Demonstrate the impact of your scholarship funds

Easily share insights and results with donors and stakeholders using dashboards, reports, and queries across the scholarship management lifecycle.



The Regent Education Advantage

- 100% cloud-based solution that integrates easily with your financial aid solution
- Dedicated implementation and product support teams with over 400 years of experience in higher education financial aid
- Collaborative, multi-step implementation approach tailored to your institution's unique requirements and goals
- Compliant with Title IV, SOC1, and SOC2

- **Two-way data integration between Regent Fund and your institution's SIS and FAM**
- **Auto packaging**
- **Advanced communications via text and email**
- **Weighting and prioritization**
- **Donor reporting**
- **Thank you notes**
- **Matching & queries**
- **Administrator dashboard view**
- **Document assignment by query**